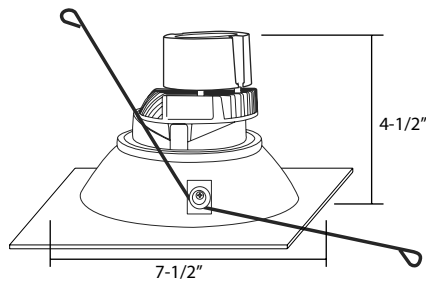




## DIMENSIONS



## USE OF PRODUCT

The Versatrim® RFL6 Series is the ideal product for energy efficient lighting in existing, retrofit, remodel, or new construction housings. This product may be used in hospitality, health care, commercial, retail, and residential applications where lights needs to be retail, and residential applications where lights needs to be controlled such as to focus on artwork, displays, objects, etc. The Versatrim will reduce energy consumption, emits little heat, and reduces cooling loads for added costs savings. Approximately 75% in energy savings compared to incandescent light source.

## VERSATRIM® FEATURES

- Watts: 11W
- Lumens: 900 Lumens
- Voltage: (120V standard); 120-277V (with optional 0-10V dimming driver)
- Color Temperature: 2700K, 3000K, 3500K, or 4000K
- Beam Angle: 18°, 38°, 60°
- Color Rendering Index: 93+ CRI Typical
- R9 Value: 85
- LED Life: 50,000 hours
- LED Type: Cree LED for maximum light output
- Versatility: Interchangeable trim in round and square
- EM Battery: 90 min
- Warranty: 5 Year Limited Warranty

## LED DRIVER

Durable 120V dimmable driver provides high power factor with the optimum thermal management to prevent damage caused by high temperature. Driver protections include: output open load, over-current and short circuit, and over temperature with auto recovery.

## DIMMING

Available in 8 driver selections. Standard Triac/ELV, 120V. (018) 0-10V dimming in 900 delivered lumens, 120-277V. (PEQ0) Lutron Hi-Lume Premier Ecosystem 0.1% w/soft on, fade to black dimming, 120-277V. (LDE1) Lutron Hi-Lume 1% Ecosystem with soft on, fade to black dimming, 120-277V. (LTE) Hi-Lume 1% 2-wire, 120V (L3DA) Hi-lume 1% EcoSystem/3-Wire L3D Driver (EEI) eldoLED Eco 1% Dim (0-10V), 120-277V. (EDIO) eldoLED Solo 0.1% Dim (0-10V), 120-277V. (EDID) eldoLED Solo 0.1% Dim (DALI), 120-277V.

## FILTER ACCESSORIES

A multitude of filter accessories are available to achieve a particular light effect. Available in frosted, honeycomb, or solite filter options.

## ELECTRICAL CONNECTION

LED module quick connect allows easy connection to Rayon LED housing. Optional edison screw base or GU24 adaptor available for retrofit applications.

## EMERGENCY BATTERY

Optional emergency battery with up to 90 minute illumination time.

## MOUNTING

Torsion springs supplied for convenient mounting to exist-ing, remodel, or new construction housing.

## LABELS/COMPLIANCE

- CSA Classified for damp location
- JAB Certified



## ORDERING INFORMATION

Series	Lumens	Color Temp.	Lens Holder Finish	Beam Angle	Reflector	Trim	Dimming
RFL6A	9L - 900lm	27 - 2700K	HW -White	18 - 18°	Square	6SLW - White	Included - Triac/ELV 018 <sup>1</sup> - 0-10V Dimming (800 lumens) PEQ0 <sup>1,2</sup> - Lutron Hi-Lume Premier Ecosystem 0.1% w/soft on, fade to black dimming LDE <sup>1,2</sup> - Lutron Hi-Lume 1% Ecosystem with soft on, fade to black dimming LTE <sup>1,2,3</sup> - Hi-Lume 1% 2-wire L3DA <sup>1,2</sup> - Hi-Lume 1% EcoSystem/3-Wire L3D Driver EEI <sup>1,2,4</sup> - eldoLED Eco 1% Dim (0-10V) EDIO <sup>1,2,4</sup> - eldoLED Solo 0.1% Dim (0-10V) EDID <sup>1,2,4</sup> - eldoLED Solo 0.1% Dim (DALI)
		30 - 3000K	HB -Black	38 - 38°			
		35 - 3500K	HS -Silver	40 - 40°			
		40 - 4000K					
					6ARLW - White	6STLB - Black	
					6ARLB - Black	6STLC - Copper	
					6ARLCH - Chrome	6STLB - Black	
					6ARLH - Haze	6STLH - Haze	
					6ARLBZ - Bronze	6STLSN - Satin Nickel	
					6ARLSN - Satin Nickel	6STLBZ - Bronze	
					6ARLCX - Custom	6STLCX - Custom	

## Option

- SBA - Screw base adapter (Included)
- G-24 - GU24 adapter
- 277SDT<sup>1</sup> - 277V Step down transformer
- 347SDT<sup>1</sup> - 347V Step down transformer
- EM<sup>1</sup> - Emergency back-up

## Note:

- Requires dedicated housing.
- Requires ceiling access
- 120V only.
- Must specify logarithmic or linear eldoLED driver.

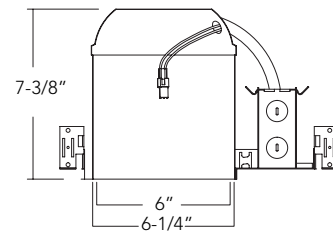
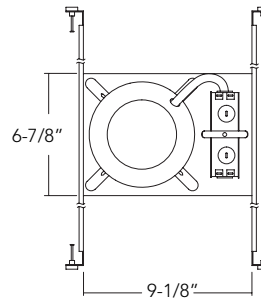


# RHL6-ICAT

6" IC Air-tight New Construction  
LED Housing

Project: \_\_\_\_\_  
Model: \_\_\_\_\_  
Location: \_\_\_\_\_  
Contact: \_\_\_\_\_

## DIMENSIONS



## USE OF PRODUCT

The RHL4-ICAT is the ideal product for general purpose recessed LED housing for residential, commercial, hospitality, health care, restaurant and retail applications. This product is compatible with the Versatrim RFL4 Series in round or square in various baffle, reflector, and trim ring color selections to achieve a particular look.

## CONSTRUCTION

- Minimum Clearance Rated for IC/ Non - IC application. "IC" or insulated ceiling housings are rated for direct contact with insulation. No minimum clearance is required.
- Ceiling Thickness Up to 1 1/4".
- Bar Hangers Bar Hangers are adjustable from 13-5/8 to 25" and can be repositioned to 90° on plaster frame. Pre-installed "real nail" easily installs in regular lumber, engineered lumber
- Junction Box Junction box is listed for through branch circuit wiring and contains seven 7/8" knockouts and four ROMEX pryouts with Romex cable clamp. Ground wire provided on J-Box.
- New Construction Frame Galvanized steel construction.
- Connection Quick connect provided for easy connection to VersaTrim RFL4 Series LED module to meet non-screw base socket requirements per California Title 24.

## DIMMING

Available in 8 driver selections. Standard Triac/ELV, 120V. (018) 0-10V dimming in 800 delivered lumens, 120-277V. (PEQ0) Lutron Hi-Lume Premier Ecosystem 0.1% w/soft on, fade to black dimming, 120-277V. (LDE1) Lutron Hi-Lume 1% Ecosystem with soft on, fade to black dimming, 120-277V. (LTE) Hi-Lume 1% 2-wire, 120V (L3DA) Hi-lume 1% EcoSystem/3-Wire L3D Driver (EEI) eldoLED Eco 1% Dim (0-10V), 120-277V. (EDIO) eldoLED Solo 0.1% Dim(0-10V), 120-277V. (EDID) eldoLED Solo 0.1% Dim(DALI), 120-277V.

## EMERGENCY

Optional emergency back-up may be ordered separately. Unit operates for 90 minutes with LED modules up to 20 Watts and is Damp location rated , 120/277AC operational.

## MODULE COMPATIBILITY

RHL4-ICAT is compatible with the Versatrim RFL4 Series in round or square in various baffle, reflector, and trim ring color selections to achieve appearance of choice.

## TITLE 24 COMPLIANCE

cUL listed for Wet location  
Certified under ASTM-283 for Air-Tight Construction  
Title 24 Compliant

## ORDERING INFORMATION

Series	Option
RHL6-ICAT - 6" IC Air-Tight New Construction LED Housing	277SDT - 277V Step down transformer 347SDT - 347V Step down transformer EM - Emergency back-up 019 - 0-10V (900 Lumens)



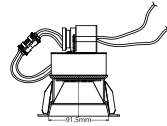
# RHL6R-ICAT

## 6" IC Air-tight Remodel LED Housing

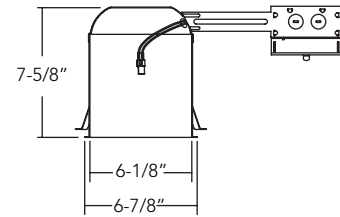
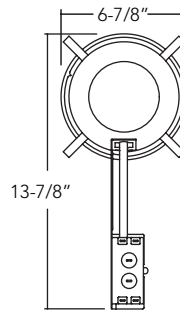
Project: \_\_\_\_\_  
Model: \_\_\_\_\_  
Location: \_\_\_\_\_  
Contact: \_\_\_\_\_

6" IC Air-tight Remodel LED Housing

### DIMENSIONS



Compatible  
with RFL6 Series



### USE OF PRODUCT

The RHL4R-ICAT is the ideal product for general purpose recessed LED housing for residential, commercial, hospitality, health care, restaurant and retail applications. This product is compatible with the Versatrim RFL4 Series in round or square in various baffle, reflector, and trim ring color selections to achieve a particular look.

### CONSTRUCTION

- **Minimum Clearance "IC"** or insulated ceiling housings are rated for direct contact with insulation. No minimum clearance is required.
- **CEILING THICKNESS** Up to 1 1/4".
- **BAR HANGERS** Bar Hangers are adjustable from 13-5/8" to 25" and can be repositioned to 90° on plaster frame. Pre-installed "real nail" easily installs in wood or composite joists.
- **JUNCTION BOX** Junction box is listed for through branch circuit wiring and contains seven 7/8 knockouts and four ROMEX pryouts with Romex cable clamp. Ground wire provided on J-Box.
- **REMODEL FRAME** Galvanized steel construction
- **CONNECTION** Quick connect provided for easy connection to Versatrim RFL4 Series LED module to meet non-screw base socket requirements per California Title 24.

### DIMMING

Available in 8 driver selections. Standard Triac/ELV, 120V. (018) 0-10V dimming in 800 delivered lumens, 120-277V. (PEQ0) Lutron Hi-Lume Premier Ecosystem 0.1% w/soft on, fade to black dimming, 120-277V. (LDE1) Lutron Hi-Lume 1% Ecosystem with soft on, fade to black dimming, 120-277V. (LTE) Hi-Lume 1% 2-wire, 120V (L3DA) Hi-lume 1% EcoSystem/3-Wire L3D Driver (EEI) eldoLED Eco 1% Dim (0-10V), 120-277V. (EDIO) eldoLED Solo 0.1% Dim(0-10V), 120-277V. (EDID) eldoLED Solo 0.1% Dim(DALI), 120-277V.

### EMERGENCY

Optional emergency back-up may be ordered separately. Unit operates for 90 minutes with LED modules up to 20 Watts and is Damp location rated, 120/277AC operational.

### MODULE COMPATIBILITY

RHL4R-ICAT is compatible with the Versatrim RFL4 Series in round or square in various baffle, reflector, and trim ring color selections to achieve appearance of choice.

### LABELS/COMPLIANCE

cUL listed for Wet location  
Certified under ASTM-283 for Air-Tight Construction  
Title 24 Compliant

### ORDERING INFORMATION

Series	Option
RHL6R-ICAT - 6" IC Air-Tight Remodel LED Housing	277SDT - 277V Step down transformer 347SDT - 347V Step down transformer EM - Emergency back-up 019 - 0-10V (900 Lumens)